



MobileTerm™

Client Installation and User Guide

Version 1.5



mobile_

mobile_ is both an invitation and a challenge...an invitation to open your mind to whatever feels unfamiliar...and a challenge to reevaluate whatever feels too familiar and to ask questions unlike everyone else. At Conceivium, we ask those questions each and every day. The result: a suite of products that represent a pure, uncompromising mobile choice from the ordinary. Whether it's in our daily lives or within the world at large, we create our own opportunities for change. For a “change is good” experience, come mobile_ with us.

MTCIG15-09/04

The information contained herein is the confidential and proprietary information of Conceivium Business Solutions, Inc. Unauthorized use of this information and disclosure to third parties is expressly prohibited. This technical publication may not be reproduced in whole or in part, by any means, without the express written consent of Conceivium Business Solutions, Inc.

Copyright © 2006 Conceivium Business Solutions, Inc. All rights reserved.

The BlackBerry and RIM families of related marks, images, and symbols are the exclusive properties and trademarks of Research In Motion Limited - used by permission. All other names and products contained herein are the trademarks or registered trademarks of their respective holders.

Conceivium Business Solutions, Inc. | conceivium.com | info@conceivium.com
8300 Greensboro Drive, Suite 800, McLean 22102 USA Tel: 703.430.6040 Fax: 703.997.8667 Toll Free: 877.932.6887 (USA only)



MobileTerm Client Table of Content

MobileTerm Client Table of Content	2
MobileTerm Client – Installation and User Guide	3
Introduction:	3
Prerequisites:.....	3
Installation:	4
Over the Air Installation:	4
Connecting to the MobileTerm Server:.....	6
Using the MobileTerm Client	7
Connections:	7
Terminal Screens:	8
Menu:	8
Local Echo Window:	8
Using the Panner:.....	9
Technical Support.....	10
Sales:.....	10



MobileTerm Client – Installation and User Guide

Introduction:

MobileTerm from Conceivium Business Solutions, Inc. is a mobile terminal for secure access to UNIX/Linux/Windows, mid-range and main frame servers, routers, and other network equipment. Features include SSH and Telnet support, Dumb, ANSI, VT100, VT200 emulation, AS400 Key Mapping, TN3270 emulation and scroll-bar panning functionality.

The installation and use of the RIM handheld client application for MobileTerm is described in this document. This client works in conjunction with an installation of MobileTerm Server v1.5.

Prerequisites:

Please ensure the following before installing the MobileTerm Client:

1. Make sure you have the right handheld System Software versions installed. You can find out the System Software version of your handheld by clicking 'Options' from the Ribbon and then clicking on 'Applications' and then from the menu click 'Modules'. Look for the version numbering of the module named 'net_rim_api'. This MobileTerm Client works with version 3.6 and higher.
2. You will need to use a desktop computer that has the BlackBerry Desktop Manager installed and the BlackBerry cradle attached. Please make sure you are using version 3.6 and above. The BlackBerry Desktop Manager will be used to load the application onto the handheld.
3. The handheld has two files associated with it (identified by the file extension): an ALX file and one COD files. You will need to have access to these two files. The COD file gets loaded on your handheld and the ALX facilitates the process.



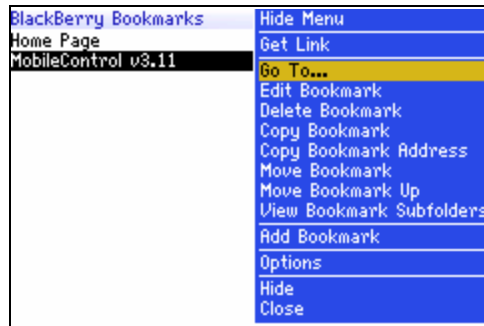
Installation:

You can download the client directly to your BlackBerry over the wireless network. This option requires the use of the BlackBerry Browser.

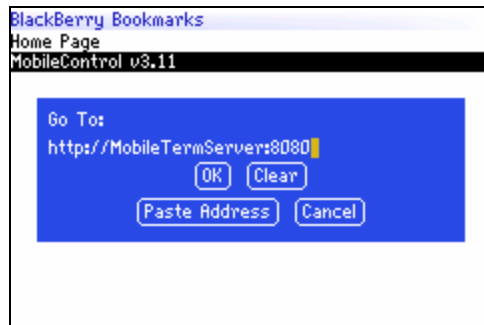
Over the Air Installation:

Please do the following to install the MobileTerm Client application over the air using the BlackBerry Browser.

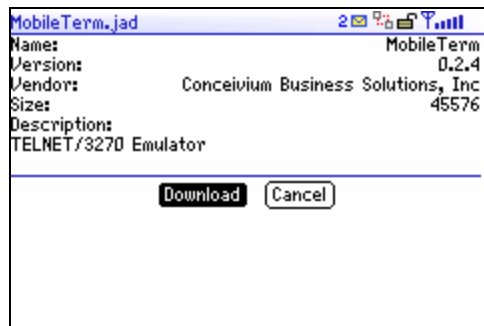
1. Launch your BlackBerry Browser



2. With your BlackBerry Browser Go To.... <http://MobileTermServer:8080>

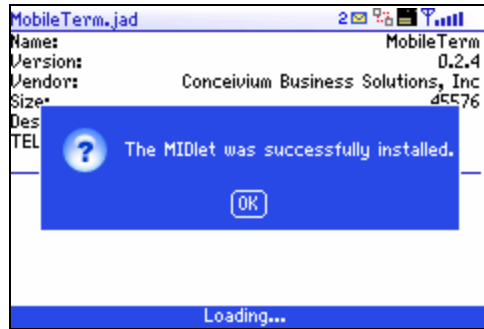


3. To start the download process, select the "Download" button. This screen will not appear if your device does not have enough space to install MobileTerm.

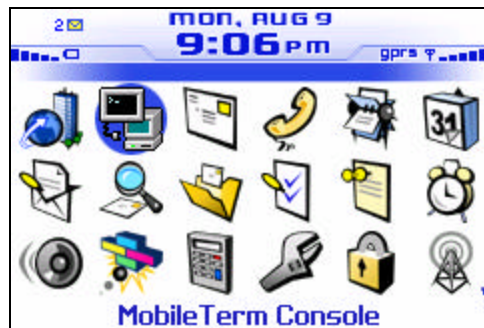




- When the download is complete you will see a success popup. Simply click the "OK" button to return to the Ribbon.



- The MobileTerm Icon will now be visible on your BlackBerry's main screen.

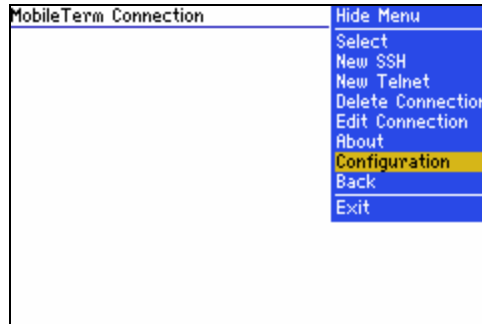




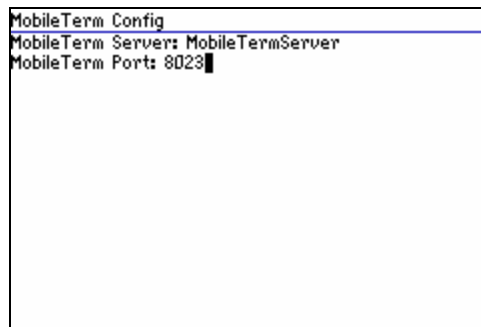
Connecting to the MobileTerm Server:

To verify that the MobileTerm Client application has been installed successfully, we will now connect to the MobileTerm Server by doing the following:

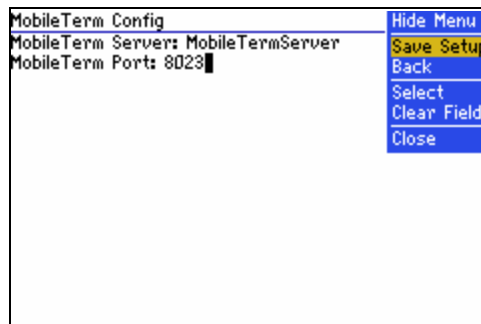
1. Using the thumbwheel, highlight and click the MobileTerm Client icon on your BlackBerry ribbon (home screen).
2. Once the application is open, you will need to configure the Client to connect to the MobileTerm Server.
 - i. Click the track wheel I order to open the MobileTerm Menu, select “**Configure**” to open the configuration screen



- ii. Fill in the required values;
 1. MobileTerm Server – The hostname/ip address of the MobileTerm Server
 2. MobileTerm Port – The port number for the MobileTerm application specified during the install. (default 8023)



- iii. Click the track wheel, and select “Save Setup” in order to save the configuration.





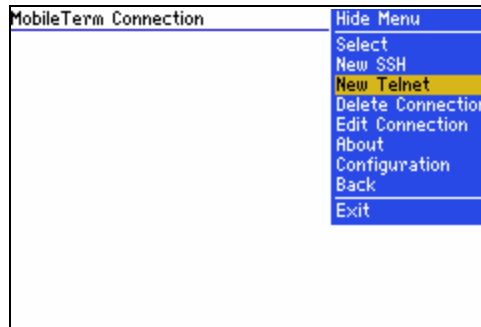
Using the MobileTerm Client

Connections:

Server Connections allow you to store your most frequently visited servers in a list, which can be easily accessed for quick connections. You can add, edit, copy and delete profiles from the Connection List screen, which is discussed in the following section.

Creating a New Connection:

1. Select **"New SSH"** or **"New Telnet"** from the menu. A form will be presented to you.



2. Fill out the form.

Connection Name - This field is used to identify your connection.

Host - Provide either the IP address or hostname of the desired SSH/Telnet server.

Port - Provide the desired port number. (Default SSH:22 and Telnet:23)

Select Terminal - Select the terminal emulation desired

Username - Desired Username for the Connection. (SSH connections only)

Password - Desired Password for the Connection. (SSH connections)

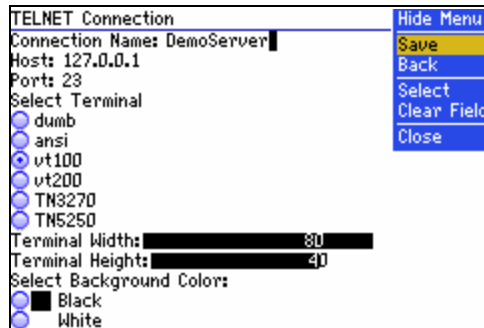
Terminal Width - Select the number of columns to emulate. Default is 80.

Terminal Height - Select the number of rows to emulate. Default is 24

Select Background Color - Select the desired Background Color for the terminal screen.

Select Text Color - Select the desired Text Color for the terminal screen.

3. Click the thumbwheel to view the menu and then click "Save" to submit the profile. Use the "Escape" key to cancel the form.

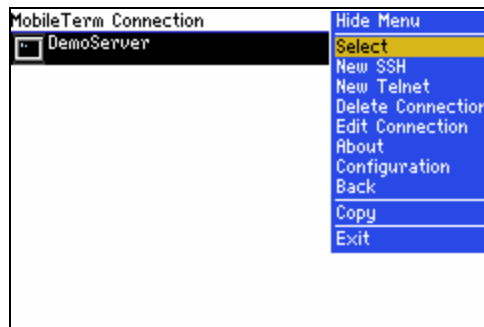


Editing, Copying, Deleting Profiles:

1. Select the connection item that corresponds to your desired action.
2. Choose and select the desired profile by rolling to and clicking the thumbwheel.

Terminal Screens:

Once you have configured and created a new connection, you can select and start the desired session by selecting "Select" using the thumbwheel.



The connection's terminal is immediately displayed. Use this terminal to interact with the SSH/Telnet session contained on the MobileTerm Server.

Each Terminal consists of a Status Bar, Menu and Command Window.

Menu:

Back – The terminal window will close and bring the Ribbon (Home Screen) to the foreground

Send Tab – This will send a Tab command to the session

Send ESC - This will send a Escape command to the session

Control Keys – This will popup the control character map

Special Char– This will popup the special character map

Turn Echo OFF - Toggles the Local Echo Mode on/off.

Close – This will close and terminate the current connection

Local Echo Window:



This is where the commands are typed and session output is received. All key events are consumed by this component simply type your command and then press enter. The terminal will also send any input entered after a few seconds if no Enter key is pressed.

Using the Panner:

ALT-THUMBWHEEL

1. Scrolling the thumbwheel down moves the panner down.
2. Scrolling the thumbwheel up moves the panner up.
3. Holding the ALT Key and scrolling the thumbwheel down moves the panner right.
4. Holding the ALT Key and scrolling the thumbwheel up moves the panner left.



Technical Support

International: 1-703-430-6040

Toll Free U.S. and Canada: 1-877-932-2887

support@conceivium.com

Sales:

International: 1-703-430-6040

Toll Free U.S. and Canada: 1-877-932-2887

sales@conceivium.com