

# Neverfail for BlackBerry



## THE COMPLETE SOLUTION FOR WIRELESS MANAGEMENT

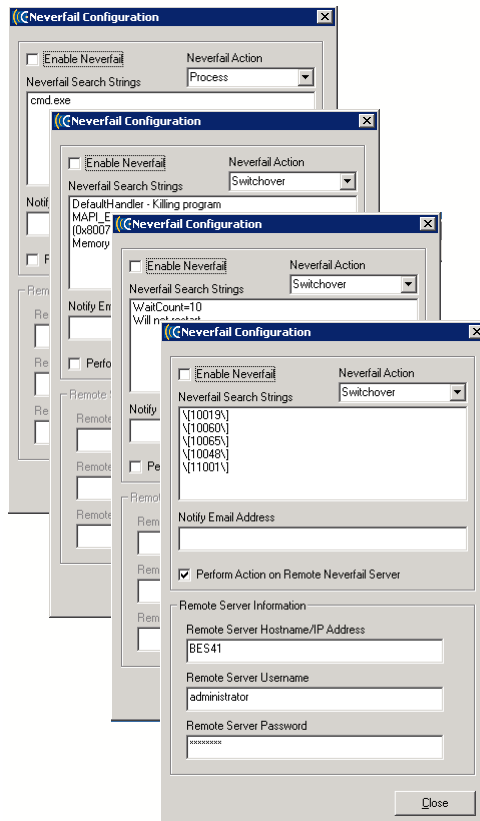
At Conceivium, we provide wireless management tools for today's smart businesses:

- *MobileAnalyzer* the remote monitor and web console for keeping watch over your BlackBerry Enterprise Server.
- *MobileMonitor Agent* plugs into existing network management frameworks to monitor the BlackBerry Enterprise Server.
- *MobileControl Administrator* the mobile systems administration tool for Windows.
- *MobileTerm* the remote access and management tools designed for the UNIX, Linux, midrange, mainframe, and systems that work with the BlackBerry® smartphone and any wireless network provider.

The integration of Conceivium MobileMonitor and Neverfail for BlackBerry® Enterprise Server provides an intelligent, closed-loop solution ensuring a fail-safe method so that organizations can continuously stay connected to working applications, no matter where a failure occurs – hardware, software, network, or operating system.

Conceivium's MobileMonitor keeps watch over these areas using specific criteria as defined in the MobileMonitor Configurator. When an event is triggered, MobileMonitor notifies Neverfail for BlackBerry which can take pre-emptive measures to correct the problem or initiate an automatic, non-disruptive failover to your secondary server which is completely transparent to your users.

The integration focuses on four common service and mail flow problem areas.

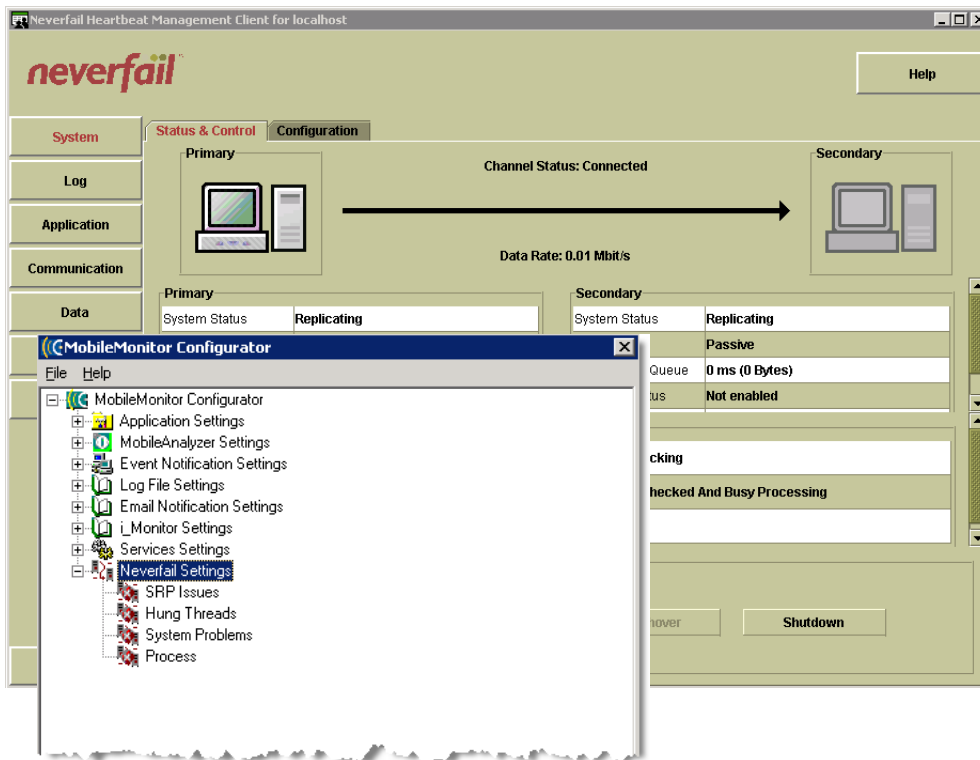


- ✓ **SRP**, which monitors worker thread responsiveness, connection timeouts, host responsiveness and availability as well as BlackBerry infrastructure disconnects due to port errors.
- ✓ **Hung thread**, which monitors the last hung thread with a specific wait count and message agent restart problems.
- ✓ **System**, which monitors the BlackBerry Enterprise Server availability as well as memory issues.
- ✓ **Process**, which monitors whether a specific process is running.

For more information about our wireless management solutions, visit our website:

[www.conceivium.com](http://www.conceivium.com)





Neverfail provides affordable cluster-class high availability and disaster recovery software solutions for BlackBerry Enterprise Server over both a LAN or WAN. Neverfail's holistic approach of addressing reliability and resilience to achieve true high availability keeps users continuously connected to mobile email and applications. And, with Neverfail's Data Rollback Module, a simple and swift application restart can be performed from an earlier point-in-time to ensure data restoration and regain data integrity quickly and efficiently after data corruption has occurred. Neverfail's mission of eliminating application downtime delivers the assurance of business continuity, removes the commercial and IT management costs associated with system downtime, and enables the more productive use of IT resources. Combined with Conceivium's end-to-end solution for remote monitoring and troubleshooting, the integrated solution ensures the availability and optimal performance of the BlackBerry Enterprise Server.

## FOR MORE INFORMATION, CONTACT:

### Conceivium Business Solutions

8300 Greensboro Drive Suite 800

McLean, Virginia 22102 USA

Tel: 703.430.6040

Fax: 703.997.8667

Toll Free: 1.877.932.2887

[www.conceivium.com](http://www.conceivium.com) | [info@conceivium.com](mailto:info@conceivium.com)

## WHAT IS MOBILE\_?

**mobile\_** is both an invitation and a challenge...an invitation to open your mind to whatever feels unfamiliar...and a challenge to reevaluate whatever feels too familiar and to ask questions unlike everyone else.

At Conceivium, we ask those questions each and every day.

The result: a suite of products that represent a pure, uncompromising mobile choice from the ordinary. Whether it's in our daily lives or within the world at large, we create our own opportunities for change.

For a "change is good" experience, come **mobile\_** with us.

For more information about the Conceivium MobileMonitor and Neverfail for BlackBerry product integration, visit our website:

<http://conceivium.portal.neverfailgroup.com/>

Think wireless.  
Imagine solutions.  
Get **mobile\_** now.

